

Horn 2 E \flat

Pictures at an Exhibition

1. Promenade 1

Modest Moussorgsky
arr. Ton van Grevenbroek 

Allegro giusto, nel modo russo; senza allegrezza, ma poco sostenuto

1 5



f

6 9



13 18



f *f*

19



f

22



f

Horn 2 E \flat

2. Gnomus

1 **Vivo** **meno mosso** con sord. **Vivo** con sord.

mp *ff*

11 **ff** 19 **ff** 29

39 **ff** 48 **Poco meno mosso, pesante** **Vivo** 57 **meno mosso**

64 **Vivo** **meno mosso** **Vivo** 70 **meno mosso**

ff *ff*

82 **poco accelerando** 90 98 *mf* *ff*

101 **ff** 104 **ff**

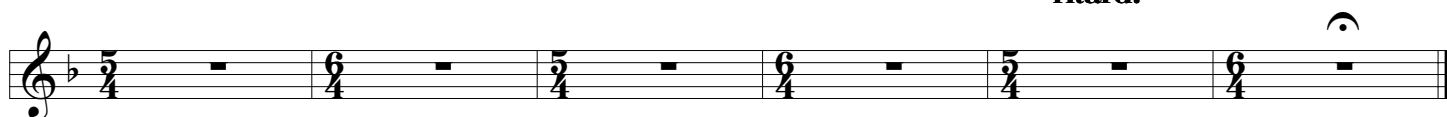
Horn 2 E \flat

3. Promenade 2

Moderato comodo e con delicatezza



ritard.



Horn 2 E \flat

4. Il Vecchio Castello

1 **Andante**

6 7 6 10 9

39 8 47 9 56 6 62 8 70 9

79 10 89 7 96 7 103 5

•

Horn 2 E \flat

5. Promenade 3

1 **Moderato non tanto, pesante** 2.

f

5 2.

mf **attacca**

Horn 2 E \flat

6. Tuileries

Allegretto non troppo capriccioso

1

7 8 14 20 3

23 26 5

f *ff*

1

7 8 14 20 3

23 26 5

f *ff*

Horn 2 E \flat

7. Bydlo

Sempre moderato pesante

1 9 10 11 21 6 27 3 32

f

33 2 38

fff

40

46 47 51 8 59 6

Horn 2 E \flat

8. Promenade 4

1

Tranquillo

5

2.

mf

7

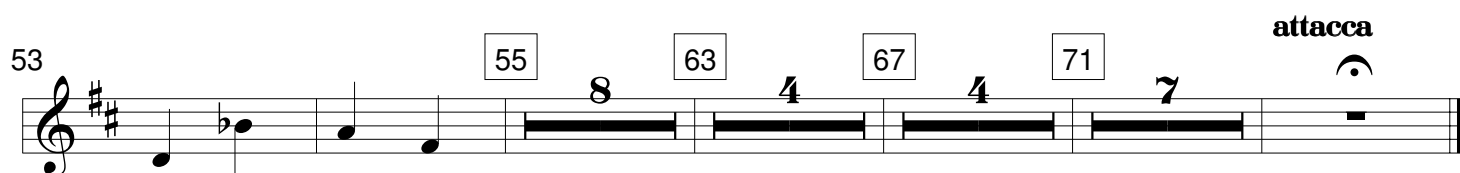
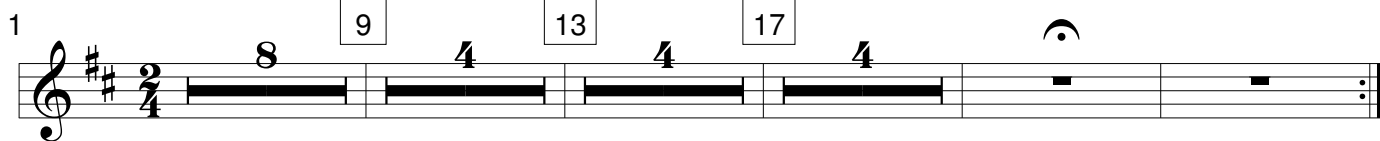
rit.

attacca

9. Ballet des poussins dans leurs coques

Horn 2 E \flat

Scherzino. Vivo leggiero



10. Samuel Goldenberg und Schmuyle

Horn 2 E \flat

Andante

5 9 $\text{♩} = 66$

13 18 22

mf < > < >

25 26 **poco ritard., con dolore**

ff

The musical score for Horn 2 E \flat consists of three staves. The first staff (measures 1-9) begins with a treble clef, a key signature of two flats, and a 4/4 time signature. It features a series of rests with durations of 4, 2, 3, 4, and 4 measures. Above the staff, the tempo is marked 'Andante', and a box containing the number '5' is placed above the second measure. A box containing the number '9' is placed above the eighth measure, followed by a tempo indication of a quarter note equal to 66 beats per minute. The second staff (measures 10-22) continues the sequence of rests with durations of 4, 1, 1, 1, 1, 1, 1, 1, 1, 1, 1, and 1 measures. Above the staff, boxes containing the numbers '13', '18', and '22' are placed above the 13th, 18th, and 22nd measures respectively. Dynamic markings include *mf* and < > (accrescendo and decrescendo) symbols. The third staff (measures 23-26) begins with a treble clef, a key signature of two flats, and a 4/4 time signature. It features a series of rests with durations of 4, 2, 1, and 1 measures. Above the staff, a box containing the number '25' is placed above the 25th measure, and a box containing the number '26' is placed above the 26th measure. The tempo is marked 'poco ritard., con dolore'. The piece concludes with a final measure (measure 26) featuring a triplet of eighth notes and a fermata. The dynamic marking *ff* is placed below the staff.

Horn 2 E \flat

11. Limoges: Le Marché

Allegretto vivo, sempre scherzando

1 *a 2* *f* *p* *mf* *mf*

6 *mp* *pp* *mp* *ff* *mf* *mf* *p sub*

12 *f* *mf* *f* *mf* *f*

20 *ff* *mf* *f*

25 *ff* *p* *mf*

30 *mf* *mp* *pp* *mp* *ff* *p* *ff*

35 *p* *ff* *f* *ff* **meno mosso**

39 **poco accell.** *cresc.* **attacca**

Horn 2 E \flat

12. Catacombae

Largo

1

8

12

16

23

p *ff* *p* *p* *ff* *ff* *ff* *p*

pp *ff*

f *pp* attacca

13. Cum Mortuis in Lingua Mortua

Horn 2 E \flat

Andante non troppo, con lamento

1

5

6

12

16

4.

con sord. espr.

p

pp

19

all con sord.

pp

Horn 2 E \flat 14. Baba Yaga
La Cabane sur des pattes de poule

Allegro con brio, feroce

1 9 8 *ff*

16 17 4 25 4 *f* *f*

31 33 *ff*

40 41 ^{a 2} 49 *ff* *ff*

51 57 3 3 *ff* *ff*

65

73 75 10 85 *ff*

90 97 *Andante mosso* ♩ = 72

106 110 3 118 6

Horn 2 E \flat

124 125 **Allegro molto**

ff

132 139

f

143 147

f *ff*

153 155 ^{a 2} 163

164 171

ff *ff*

176 179

187 189 199 **poco ritard.**

attacca

Horn 2 E \flat

15. La Grande Porte de Kiev

Allegro alla breve. Maestoso con grandezza

1 *f*

9 *mf*

13

17 *f* *ff*

22

25 *f*

30 17 47

49

55

57

64 17

Horn 2 E \flat

81 89

90 97

99 105

107 111

115 **Meno mosso sempre maestoso** 123

126 131

135 137

149 157

157 **poco a poco rallentando** 163

166

175

mf

p cresc.

f

mf *f*

mf cresc.

ff

ff

mf cresc.

f cresc.

sempre cresc.

ff